

## DC-4 DC Brushless Motor Sliding Door

● Middleweight type (Suitable for building)

By employment of DC Brushless Motor, quiet and smooth opening/closing movements have been achieved. The door is equipped not only with the various functions such as "Press Closing," "Memory," "Catch-Return," "Beam Switch" and "Special function", but also with "Input (Output) option set" which enables to input (output) every kind of signals.

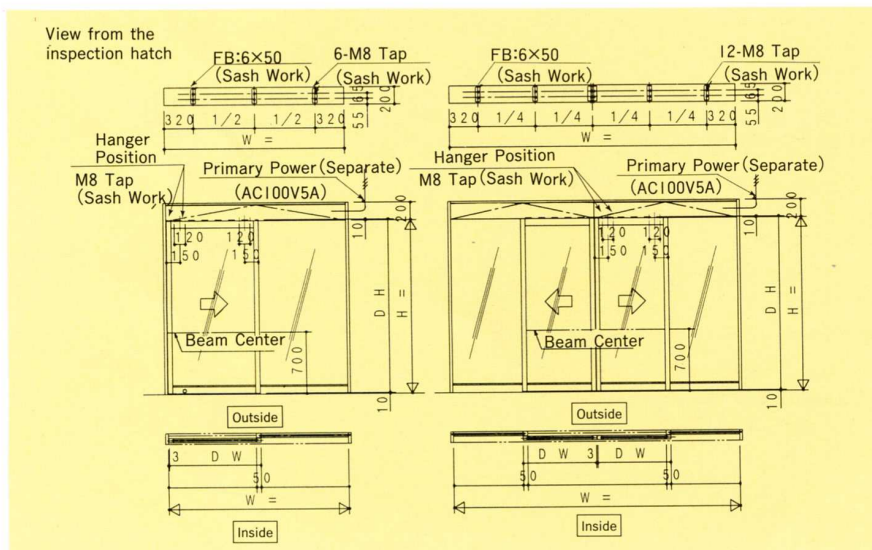
Also, the rail can be easily replaced at the site for the maintenance as removed from the channel very easily.

### Features

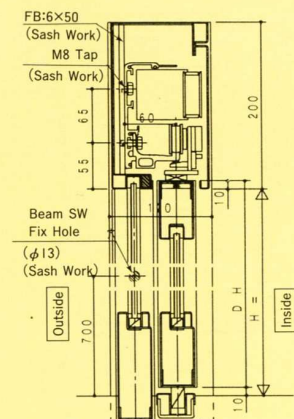
- When the door closes at the full position, no gap is made between the door-meet sides, as constantly pressed firmly by the "Press Closing" function at the fully closed position.
- Memory function is equipped in the controller to keep data for door stroke and brake position once memorized at the installation time.
- The door returns by "Catch-Return" function when hit an obstacle.
- The various special function can be used promptly by means of "Switch Setting" fixed inside the controller.

### Option

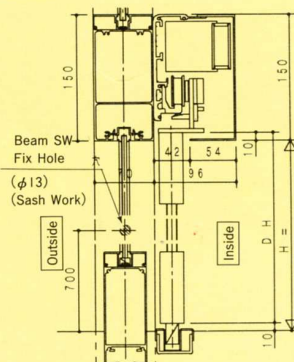
- Every kind of Input/Output signals.  
By using "Input (Output) option set," signal inputs of every kind and signal output according to its door movement can be used.  
Please ask separately for further details of "Special function" and signals input/output.



Concealed Type



Surface Type



### SPECIFICATIONS

		DC-4-S	DC-4-SS
		Single Sliding	Bi-Parting
OPERATOR	Door Weight	Less 120kg×1	Less 100kg×2
	Standard Channel Length	2,000mm	4,000mm
	Opening/Closing Speed	250~500mm/sec.(Variable)	250~450mm/sec.(Variable)
	Power Supply	AC100V±10% 50/60 Hz 5A	
	Time Door Remains Open	0~10 Seconds (Variable)	
	Electric Consumption	120W	
	Driving System	55W DC Brushless Motor through Teethed Belt	
BEAM SWITCH	Manual Opening/Closing force	Less than 3 kgf	
	Beam Detectable System	Transmission System	
	Beam Element of Transmitter	Infrared Luminous Diode	
	Beam Element of Receiver	Photo Transistor	
	Beam Maximum Set Distance	Less than 8m (27 feet)	
	Response Time	At Interception: Less than 30msec. At Beam-Receiving: Less than 1 Sec.	
	Standard Functions	Catch-Return, Beam Switch Circuit, Various Special Movements	
Optional Features	Electric Lock, Power Failure Drive Unit, Various Signal Inputs/Outputs		

## DC-10A DC Brushless Motor Sliding Door

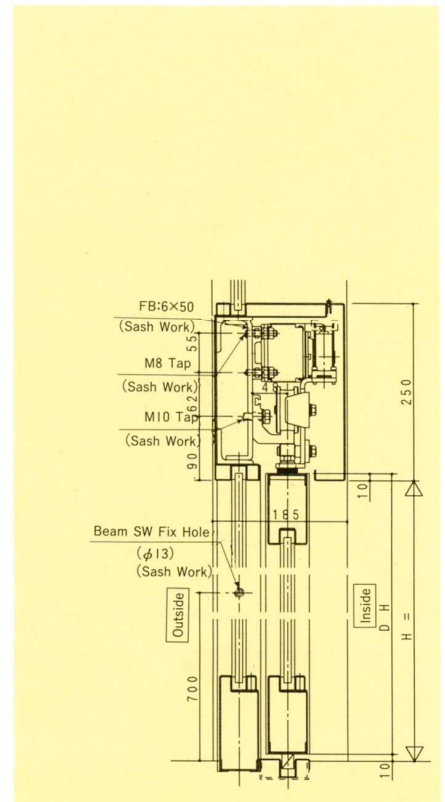
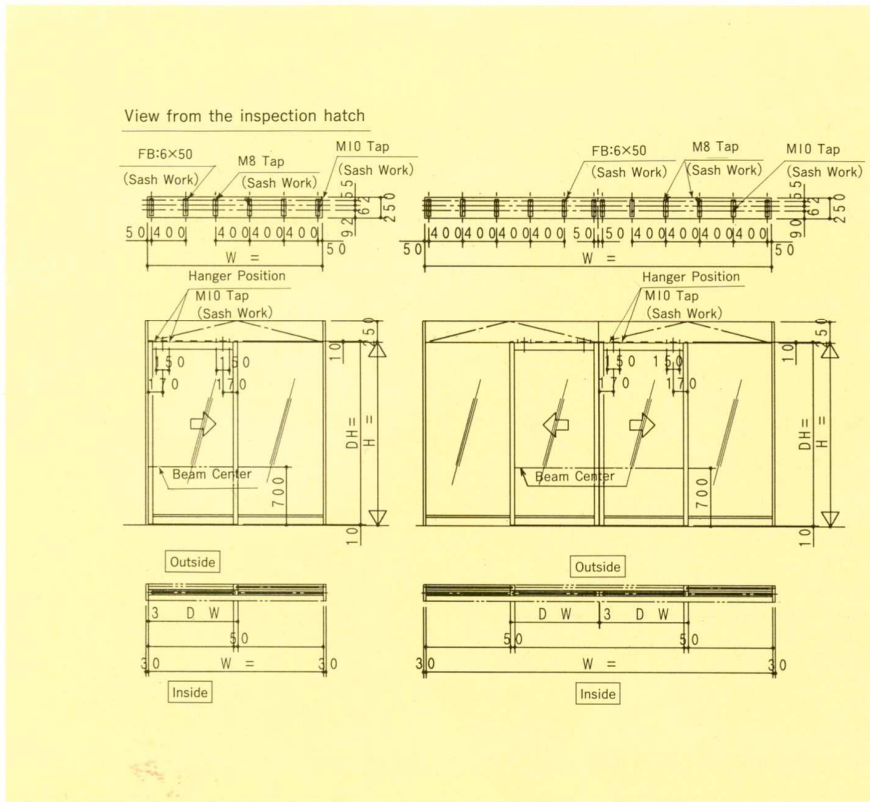
● Heavyweight Type (Suitable for High-Rise Building and Hospital)

The operator is most suited for larger door operation at the high-rise opening entrance where a quietude and smoothness are always required. The compact DC motor unit plays high powered movement and versatile functions.

The operator, adopting the same features just as DC-4 model has, i.e. high reliability, durability and multi-functions, has now been completed, so that heavy weight large door can be operated smoothly with the new operator now.

### Features

- In spite of the heavyweight typed operator, hanger rail made of hard aluminum and hanger assembly with plastic (resin) wheel are used for smooth operation as the standard.
- Installation and maintenance are easy and simple, as the control equipments are united.



### SPECIFICATIONS

	DC-10A-S		DC-10A-SS
	Single	Sliding	Bi-Parting
Door Weight	Less 200 Kg×1		Less 200 Kg×2
Opening/Closing Speed	250mm-400mm/sec. (Variable)		
Power Supply	AC 100V ±10% 50/60Hz 7A		
Time Door Remains Open	0-10 sec (Variable)		
Driving System	150W DC Brushless Motor through Teethed Belt		
Beam Switch Category	Correspond to DC-4 Model		

## DC-5 DC Brushless Motor Sliding Door

●Middleweight type. (Suitable for temper glass door.)

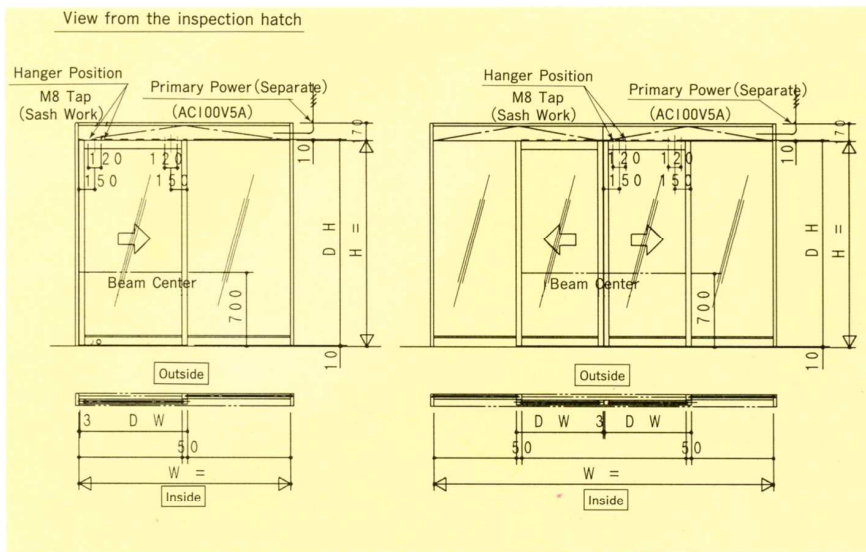
By employment of DC Brushless Motor, quiet and smooth opening/closing movements have been achieved. The operator can cope with bi-parting doors with temper glass leaf of the most popular sized DW914×DH2134(mm). The door is equipped not only with the various functions such as "Press Closing," "Memory," "Catch-Return," "Beam Switch," etc., but also with "DC-5S" controller which provides every kind of signal outputs. Also two types are available, namely, one is normal DC-5 type with rail and channel combined, and the other is DC-5P with rail and channel separated for the rail exchange.

### Features

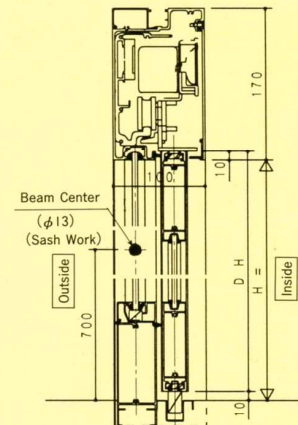
- Press-closing function makes no gap between the door-meet sides. Suitable for windy sites, wavering places as in vehicles.
- Memory function is equipped in the controller to keep data for door stroke and brake position once memorized at the installation time.
- The door returns by "Catch-Return" function when hit an obstacle during the operation.

### Option

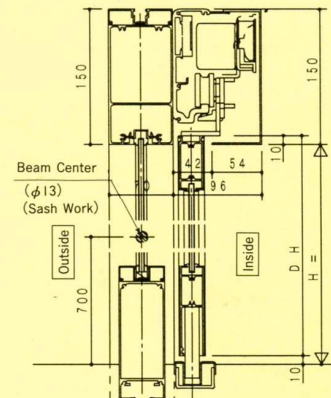
- Every Kind of Input and Output Signals.  
By using the controller "DC-5S" and the "Output option set" together, the following signal outputs can be used according to its door movement: ● Full Opening Output ● Full Closing Output ● Chime Output ● Lock/Unlock Output



### Concealed Type



### Surface Type



### SPECIFICATIONS

		DC-5-S	DC-5-SS
		Single Sliding	Bi-Parting
Door Weight		Less 80kg×1	Less 75kg×2
Standard Channel Length		2,000mm	4,000mm
Opening/Closing Speed		200~500mm/sec.(Variable) 200~450mm/sec. (Variable)	
Power Supply		AC100V±10% 50/60Hz 5A	
Time Door Remains Open		0~10 Seconds (Variable)	
Electric Consumption		100W	
Driving System		40W DC Brushless Motor through Teethed Belt	
Manual Opening/Closing force		Less than 3 kgf	
OPERATOR	Beam Detective System	Transmission System	
	Beam Element of Transmitter	Infrared Luminous Diode	
BEAM SWITCH	Beam Element of Receiver	Photo Transistor	
	Beam Maximum Set Distance	Less than 8m (27 feet)	
Response Time		At Interception: Less than 30msec. At Beam-Receiving: Less than 1 sec.	
Standard Functions		Catch-Return, Beam Switch Circuit.	
Optional Features		Electric Lock, Power Failure Drive Unit, Various Signal Outputs	